

ANGLE RADIATOR VALVE

FAF4400

4400



Features

- Stainless steel disc, which is positioned vertical to flow direction seats on sealing surface that processed on the body via expander, force and provides %100 tight sealing.
- The expander shortens and the disc shrinks back and let to flow between the body and the disc when the determined flow in the system starts.
- It can be used at horizontal and vertical positions.
- FAF branded brass products made of MS58 quality brass. It has high durability and impact resistance at low temperature.
- Stock piled for quick delivery.

Temperature

- -10, +120 °C

PRODUCTS MODEL CODES

FAF4400	ANGLE RADIATOR VALVE
FAF4400	THERMOSTATIC RADIATOR VALVE
FAF4500	STRAIGHT RADIATOR VALVE

MATERIAL SELECTION

Body	CuZn40Pb2 - Brass, Nickel Plated
Sealing Group	CuZn40Pb2 - Brass
Nipple Joint Nut	CuZn40Pb2 - Brass, Nickel Plated
Handwheel	ABS
Coupling Bobbin	CuZn40Pb2 - Brass, Nickel Plated
Fastening screw	Galvanized Steel

PRODUCTION STANDARDS

DN15

Design	TS 579
Connection	Threaded EN ISO 228-1
Marking	EN 19
Tests	TS 579

Product Description

FAF4400 Angle Type Radiator Valve maintains %100 tight sealing by the disc seats on sealing within the flow section through rotating the handwheel.

Scope of Application

- Hot water
- Radiators
- Industrial Applications

VALVE TEST PRESSURE (Bar)

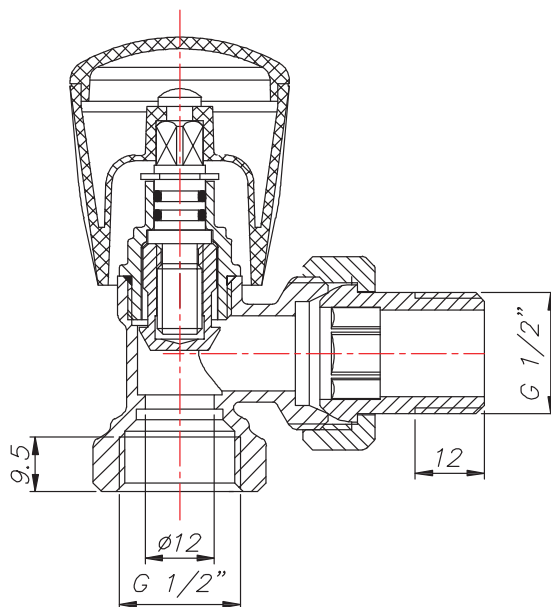
MAX. OPERATING PRESSURE	BODY / SHELL TEST	SEAT TEST
10	15	11
16	24	17,6

100% of the valves are subjected to hydrostatic tests at FAF facilities.



ANGLE RADIATOR VALVE FAF4400

Technical Details & Drawing, Dimensions



A	B	R1	R2
24	72	1/2"	1/2"
16	71	1/2"	1/2"

* Valves can be produced with bigger sizes when requested.